

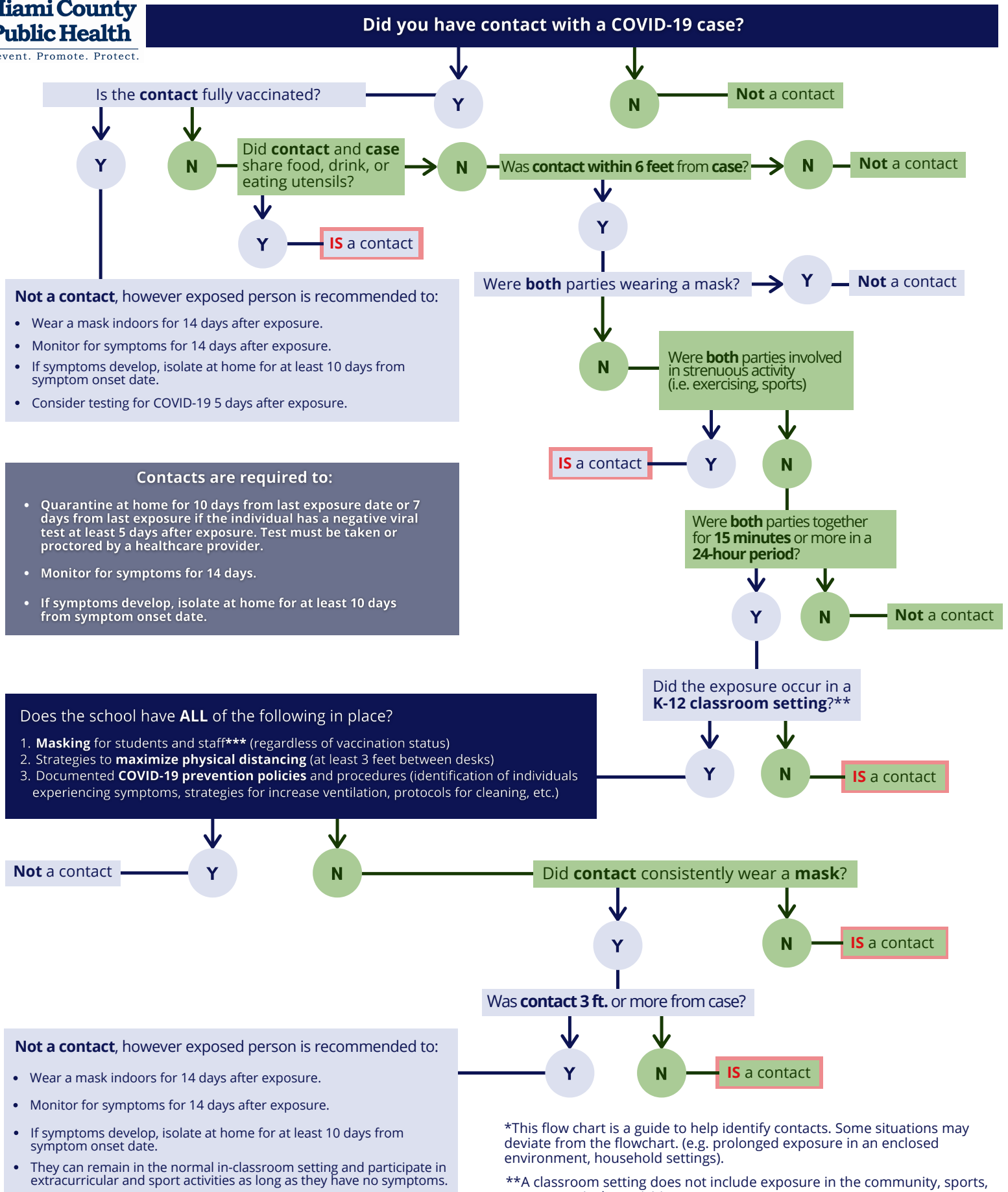


GUIDELINES FOR QUARANTINE AFTER EXPOSURE

This flow chart can help guide quarantine decisions after a person is exposed to someone with COVID-19.*

**Miami County
Public Health**

Prevent. Promote. Protect.



*This flow chart is a guide to help identify contacts. Some situations may deviate from the flowchart. (e.g. prolonged exposure in an enclosed environment, household settings).

**A classroom setting does not include exposure in the community, sports, or extracurricular activities.

***Students and staff who do not wear a mask during exposure will be required to quarantine.